

# Metro Trains Community Education Unit - ENews

Primary School Newsletter



Issue 7 - Term 3 2017

## Welcome Back!

We trust you had an enjoyable break and are ready for the second half of 2017.



## Rail Safety Week

Rail Safety Week (RSW) will be held from August 14 - 20 2017 and aims to improve awareness around level crossing and track safety.

To celebrate RSW, our Community Education Unit will be presenting a 500GB Playstation 4 to the winning entrant of our "Safe Travel on Metro Trains" poster competition. With so many fabulous entries (over 280!) our judges will have a challenging task to decide the top three entries.

If you're interested in exploring rail safety during August, please visit <http://www.tracksafeeducation.com.au/> and <http://tracksafefoundation.com.au/about> for lesson plans and Rail Safety Week activities respectively.

## Under Construction

A number of railway projects continue to roll out across the network. These projects will help improve safety for Melburnians and deliver a better service to Metro Trains customers. To complete the improvements, there will be pedestrian and vehicle detours and planned service disruptions, particularly at stations along the Cranbourne, Pakenham and Hurstbridge lines. For further information, visit <http://levelcrossings.vic.gov.au/disruptions>. Please allow extra time for journeys while works are taking place. To sign up for specific project updates visit <http://levelcrossings.vic.gov.au/rail-projects>.



## Term 4 - Year 6 Transition

Are your Year 6 students prepared for independent travel in 2018? The CEU provides a Year 6 Transition incursion during term 4 to assist students who will be travelling to secondary school independently. Students will learn about the role of Authorised Officers, myki, planning journeys and key rail safety messages. The program requires access to iPads/tablets and encourages students to work collaboratively to complete Journey Planner scenarios. Safe travel information such as how to get assistance in emergencies is reinforced through an interactive quiz. To secure a presentation for your Year 6 students, please contact [community.education@metrotrains.com.au](mailto:community.education@metrotrains.com.au).



Three points of contact

## Group Travel Advice

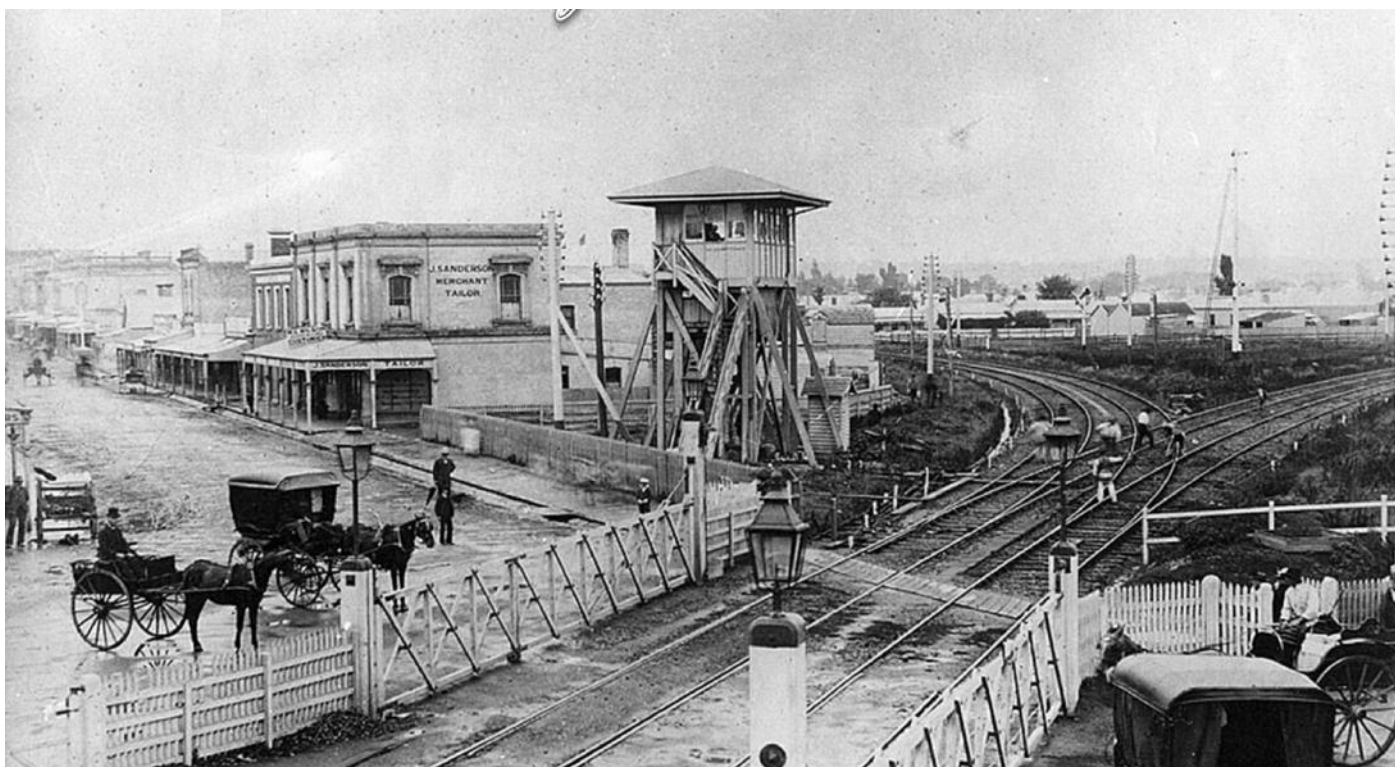
Planning an excursion using Metro Trains? Get in contact with us to book a free rail safety incursion for your students [community.education@metrotrains.com.au](mailto:community.education@metrotrains.com.au). We offer an interactive learning program for Year 1/2, Year 3/4 and Year 5/6 students which encourages collaboration and discussion. In addition, our friendly Community Education Officers can provide you with group travel advice to ensure everyone is *on the right track* to a safe journey.

### When travelling please...

- Safely position students on the station platform, behind the yellow line, at least 10 minutes ahead of the scheduled departure time to avoid having to run for trains.
- Ensure students are seated or maintaining three points of contact with the train throughout the journey (eg. standing and holding hand rails or back of seats).
- Prepare students for exiting the train prior to arriving at the destination station to facilitate a safe and quick exit.

## Step Back in Time...

Swan Street Richmond, looking East between 1874 and 1884. The tracks curving to the left are towards East Richmond and the tracks curving to the right are towards South Yarra.



## Kids Training Kids...

We are seeking examples of student work related to rail safety to share with our schools and customers. If your students have completed a writing task or rail safety project, we would love to share it. Please email copies of student work to [community.education@metrotrains.com.au](mailto:community.education@metrotrains.com.au).

## How Can We Help You?

We welcome suggestions about how we can best support teachers. This may be in relation to group travel planning, classroom activities or our quarterly newsletter. Feel free to share your idea via [community.education@metrotrains.com.au](mailto:community.education@metrotrains.com.au).