

# 5 easy steps to iSave!

School Chaplains play a vital role in the wellbeing of students. Many School Principals tell us they couldn't do without them.

Some schools receive part-funding for their Chaplains, but many schools receive no government funding. Either way, additional funds are needed to support the Chaplain. That's where iSave! can help.

When you sign up to become a member of the iSave! discount program, you save money and you support your school's Chaplaincy program!

## A couple of points to remember

- Purchasing gift cards using a debit or credit card, incurs a card fee. Avoid this by depositing funds in your 'ewallet' which attracts no fees at all. Go to 'My Activity' to add funds to your ewallet.
- You can only access the discounts via the Inspire site, from your phone or computer as it is password protected for your security.
- You will require an email address and access to internet banking to use the system effectively.

Go to:  
[www.inspirechaplaincy.org.au/isaverewards/](http://www.inspirechaplaincy.org.au/isaverewards/)  
Simply click on the Inspire logo in the box to purchase your \$22.00 (Inc GST) annual iSave! membership.

# 01

Fill in your details, including choosing the school Chaplaincy program you wish to support. Add to cart, just like any regular online purchase.

# 02

Follow the prompts, they will take you to the cart, and then the billing page. You have several options including PayPal or credit card. Complete as per your choice.

# 03

You will receive several emails, a Welcome to isave! email, a receipt for your payment from our payment gateway (we use PayPal), and a login email that contains your user name and password.

# 04

On your mobile, follow the 'login' link sent to you by email, enter your user name and password. Click the 'isave/my account' tab and select the second line down which reads 'login to iSave' then click the red 'login' button. When prompted, select 'add to home screen'.

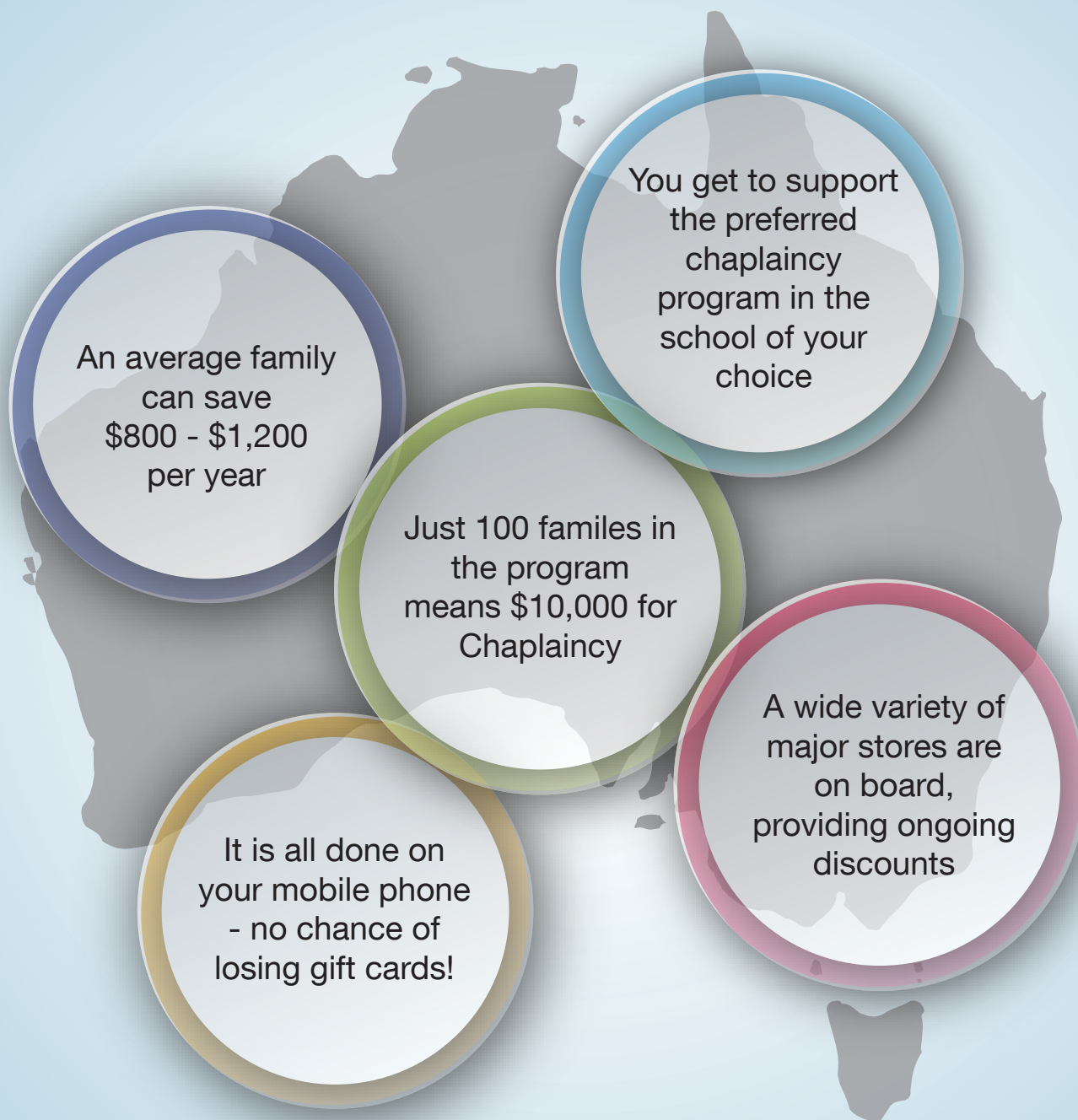
# 05



# Why?



**ISave!**  
INSPIRED SAVINGS



**HOYTS**



**coles**

<https://www.inspirechaplaincy.org.au/isaverewards/>

*\*All figures quoted are indicative of average discounts and spending.*